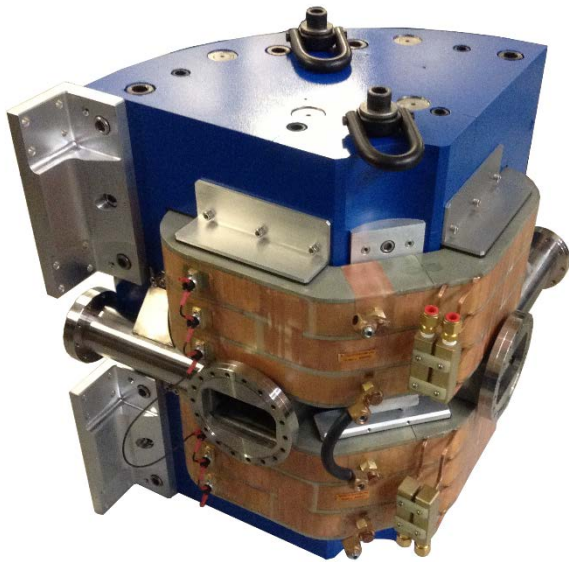


90° dipole magnet, with entrance & exit collimators and beam spill readback



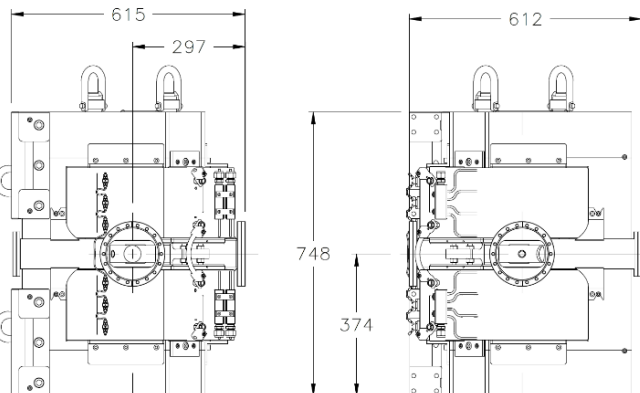
The D-Pace 90° Bender Magnet can be purchased as:

- Magnet only
- Magnet with Vacuum box having thru-port, collimator mounting ports, and inspection port
- Magnet with vacuum box & entrance and exit collimators (collimator seen below)
- Above options with horizontal or vertical support stand

- Bend charged particle beams through 90°
- Entrance & exit beam collimators available, with current readback
- Horizontal and vertical mounting options available

SPECIFICATIONS: DM-85.90

Mass (Weight)	1067 kg (magnet only)
Bend Angle	90°
Bend Radius	191 mm
Effective Length	300 mm
Max. Field	1.3 T
Max. Current/Voltage	125 A
Max. Voltage	33 V
Magnet Gap, Clear Gap Gap	54 mm, 49 mm
Thermal Switches Trip Temperature	3 per coil (1 per pancake) 70°C
Vacuum Chamber	316 SS (UHV)
Entrance/Exit Port	DN 125 CF (6-3/4 in CF)
Thru-Port & Collimator	DN 63 CF (4-1/2 in CF)
Beam Collimators	Entrance & Exit available
Collimator I.D.	Ø46 mm
Cooling Water Flow	> 7 L/min (3.5 L/min/coil, parallel)
ΔT @ Max Current	~14°C
Inlet Pressure	~14.5 psi
Pressure Drop	~4 psi



Entrance / Exit Collimator